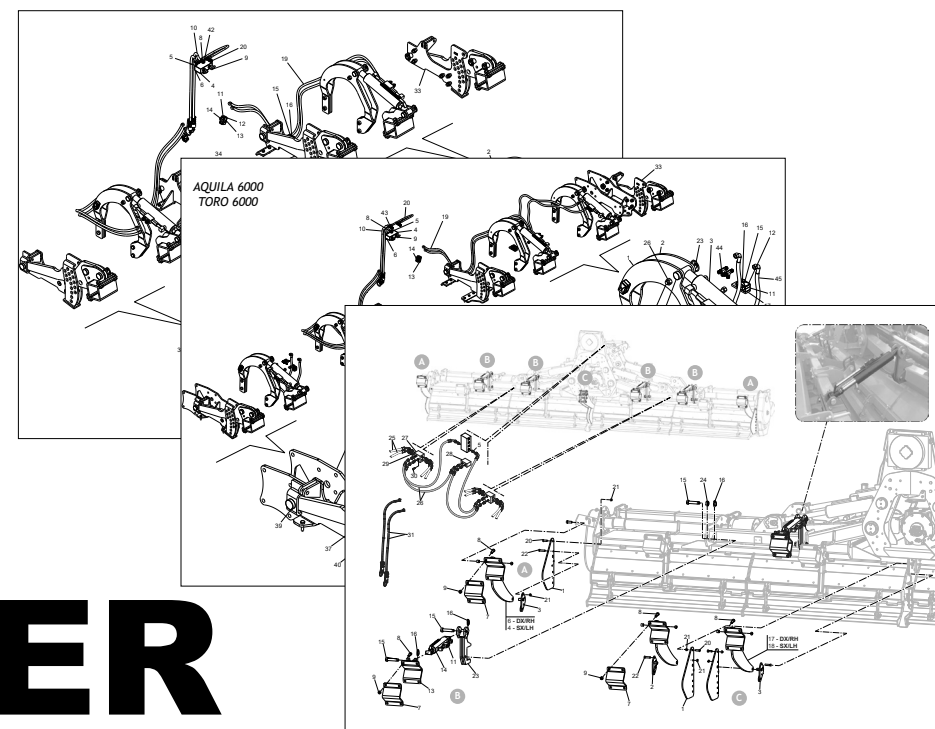


**MASCHIO GASPARDO S.p.A.**



# RULLI KERNER

**Cod: F07013394 2022-06**

- \*) Valido per Paesi UE
- \*) Valid for EU member countries
- \*) Valable dans les Pays UE
- \*) Gilt für EU-Mitgliedsländer
- \*) Válido para Países UE

- IT** PARTI DI RICAMBIO
- EN** SPARE PARTS
- DE** ERSATZTEILE
- FR** PIÈCES DÉTACHÉES
- ES** PIEZAS DE REPUESTO

**PARTI DI RICAMBIO**

Le ordinazioni delle parti di ricambio vanno fatte presso i nostri concessionari di zona e devono essere sempre corredate dalle seguenti indicazioni:

- **Tipo, modello e numero di matricola dell'attrezzatura.** Tali dati sono stampigliati nell'apposita targhetta di cui è dotata ogni attrezzatura.
- **Numero di codice della parte richiesta** rilevabile dal catalogo ricambi.
- **Descrizione del particolare e quantità richiesta.**
- **Numero della tavola.**
- **Mezzo di trasporto.** Nel caso questa voce non sia specificata, la Ditta Costruttrice, pur dedicando a questo servizio una particolare cura, non risponde di eventuali ritardi di spedizione dovuti a cause di forza maggiore. Le spese di trasporto si intendono sempre a carico del destinatario. La merce viaggia a rischio e pericolo del committente anche se venduta franco destino.

**NOTA:** Il termine **(Dx) Destro** o **(Sx) Sinistro** della macchina o di parti di essa, è inteso guardando la macchina dalla parte posteriore. Le eccezioni saranno indicate.

**SPARE PARTS**

*Orders must be transmitted through our area dealers and should always include the following indications:*

- **Type, model and serial number of the machine.** *These data are punched on the data plate with which every implement is equipped.*
- **Code number of the required spare part.** *This will be found in the spare parts catalogue.*
- **Description of the part and required quantity.**
- **Table number.**
- **Means of dispatch.** *If this item is not indicated, the Manufacturer, while dedicating particular care to this service, shall not be held responsible for delays in delivery caused by cases of force majeure. Transport expenses shall always be at the consignee's charge. The goods travel at the purchaser's risk and peril even when sold ex destination.*

**NOTE:** *The symbols (Dx) right and (Sx) left, concerning the machine or single parts of it, are referred, as in the figure, to a rear view of them. Exceptions will be indicated.*

**ERSATZTEILE**

Die Bestellungen müssen bei unseren Gebietshändlern aufgegeben werden. Bei der Bestellung sind stets die folgenden Angaben zu machen:

- **Typ, Modell und Serien-Nummer des Geräts.** Diese Daten stehen auf dem Typenschild, mit dem jedes Gerät versehen ist.
- **Artikel Nr. der erforderlichen Ersatzteile.** Diese stehen im Ersatzteil-Katalog.
- **Beschreibung des Ersatzteils und die erforderliche Stückzahl.**
- **Tafelnummer.**
- **Versandmittel.** Wenn dieser Punkt nicht spezifiziert wird, haftet die Herstellerfirma nicht für etwaigen Lieferverzug aufgrund höherer Gewalt, auch wenn er diesen Service besonders aufmerksam abwickelt. Die Frachtkosten gehen dagegen immer zu Lasten des Empfängers. Die Ware reist auf Gefahr und Risiko des Auftraggebers, auch wenn frei Haus Verkauft vereinbart worden ist.

**N.B.:** Die Merkzeichen **(Dx) rechts** und **(Sx) links** betreffen eine rückwärtige Aussicht der Maschine oder Teile von ihr (siehe Bild). Ausnahmen werden gezeit.

**PIECES DÉTACHÉES**

*Les ordres doivent être effectués auprès de nos concessionnaires de zone en précisant les indications suivantes:*

- **Type, modèle et numéro de série de la machine.** *Ces données sont gravées sur la plaque d'identification de chaque outil.*
- **Numéro de code de la pièce détachée** indiqué sur le catalogue des pièces détachées.
- **Description de la pièce et quantité requise.**
- **Numéro de plan.**
- **Moyen d'expédition.** *Si cette rubrique n'est pas indiquée, le Constructeur, bien que soucieux de ce service, ne répond pas des retards d'expédition pour des causes de force majeure. Les frais de transport sont toujours à la charge du destinataire. La marchandise voyage aux risques et périls de l'acheteur même si vendue franco de port.*

**N.B.:** *Les références (Dx) droit et (Sx) gauche de la machine ou des parties de la même, est entendue, comme de la figure, en regardant la machine de derriere dans le sens de marche.*

**RESPUESTOS**

Los pedidos han de efectuarse en nuestros concesionarios de zona y deben incluir siempre las siguientes indicaciones:

- **Tipo, modelo y número de matrícula del equipo.** Dichos datos están impresos en la relativa placa presente en el equipo.
- **Número de código de la parte requerida** presente en el catálogo respuestos.
- **Descripción de la pieza y cantidad requerida.**
- **Numero de ilustración.**
- **Medio de transporte.** En caso que este ítem no esté especificado, el Fabricante, aún prestando la debidas consideraciones para este aspecto, no responde por eventuales retardos de env'o debidos a causas de fuerza mayor. Los gastos de transporte se consideraran siempre a cargo del destinatario. La mercadería viaja bajo riesgo y peligro del comprador, incluso cuando se vende franco destino.

**N.B.:** La referencia **(Dx) derecha** o **(Sx) izquierda** de la máquina o de sus componentes, se entiende, como en la figura, mirando la máquina por la parte trasera. Se indicarán las excepciones.

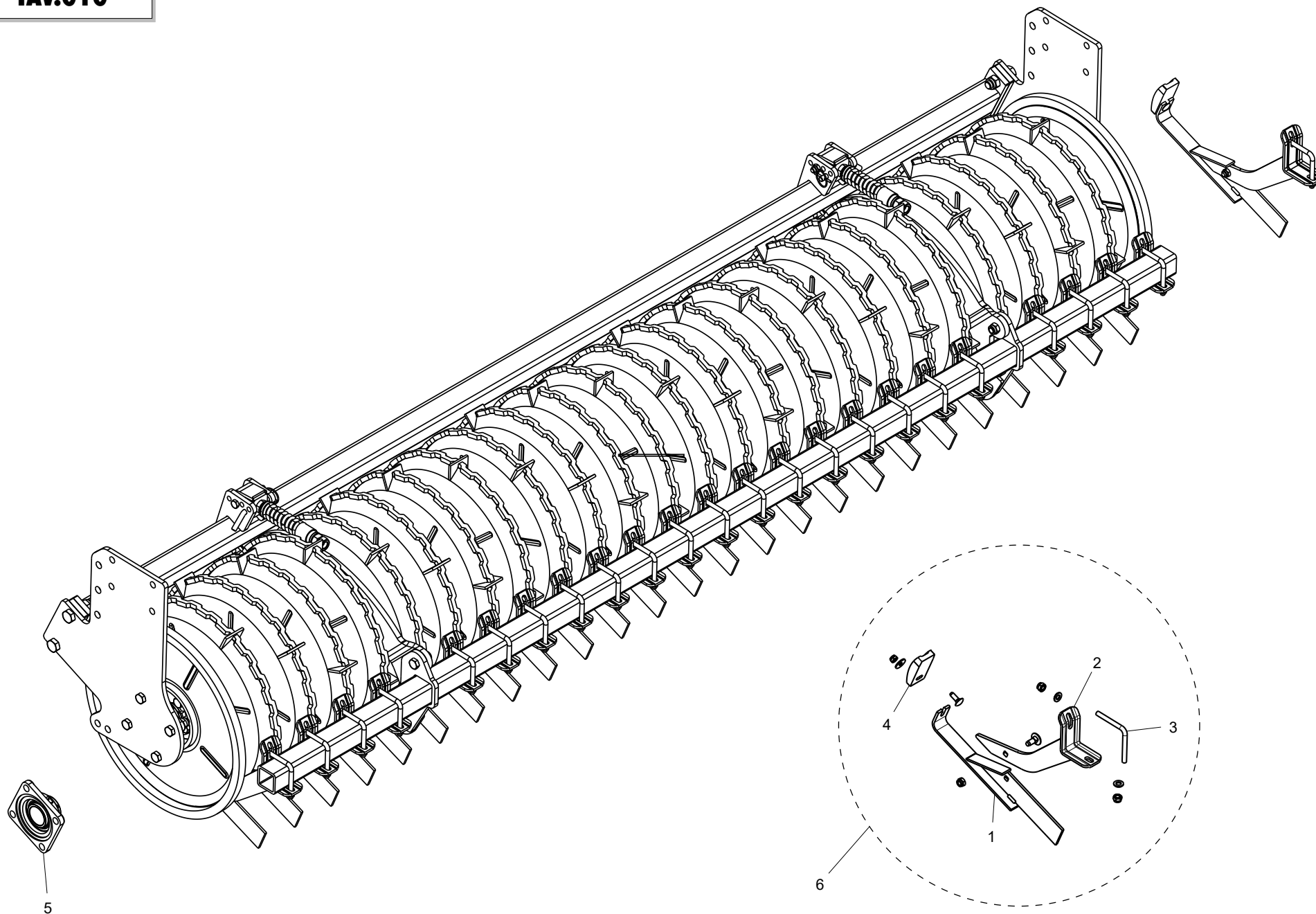
**INDICE**

<b>N° Tavola</b>	<b>Descrizione</b>	<b>Pagina</b>
TAV.010	RULLI KERNER .....	5
TAV.020	KIT IDRAULICO (TORO 5000, AQUILA 5000).....	7
TAV.030	KIT IDRAULICO (TORO 6000, AQUILA 6000).....	9
TAV.040	KIT IDRAULICO (JUMBO) .....	11
TAV.050	KIT IDRAULICO (PANTERA) .....	13
TAV.060	BARRA LIVELLATRICE.....	15

**INDEX**

<b>N° Table</b>	<b>Description</b>	<b>Page</b>
TAV.010	KERNER ROLL .....	5
TAV.020	HYDRAULIC KIT (TORO 5000, AQUILA 5000).....	7
TAV.030	HYDRAULIC KIT (TORO 6000, AQUILA 6000).....	9
TAV.040	HYDRAULIC KIT (JUMBO) .....	11
TAV.050	HYDRAULIC KIT (PANTERA) .....	13
TAV.060	LEVELLING BAR.....	15

**TAV.010**

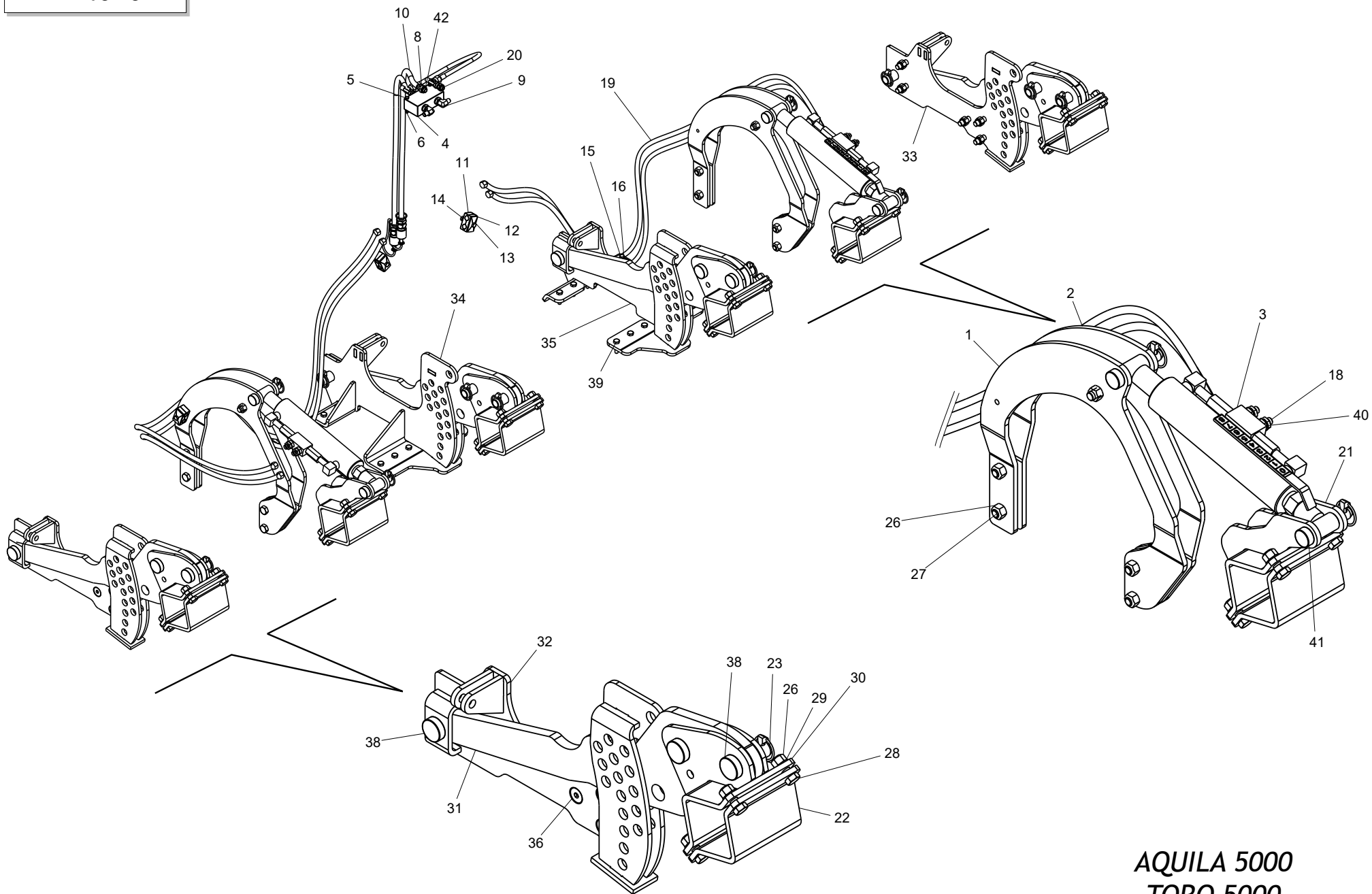


**RULLI KERNER  
KERNER ROLL**

**TAV.010**

Pos.	Cod.	Descrizione	Description	Benennung	Description	Descripcion
1	F20122215R	COLTELLO CW55	CW55 KNIFE			
2	F20122216R	PARTE SUPERIORE PORTACOLTELLI	UPPER PART KNIFE HOLDER			
3	F20122217R	CAVALLOTTO 90°	U BOLT 90°			
4	F20122218R	RASCHIETTO IN PLASTICA	PLASTIC SCRAPER			
5	F04150153R	CUSCINETTO FLANGIATO FYJ 50 TF	FLANGED BEARING FYJ 50 TF			
6	F20122219R	ASSIEME RASCHIETTO	SCRAPER ASSEMBLY			

**TAV.020**



**AQUILA 5000  
TORO 5000**

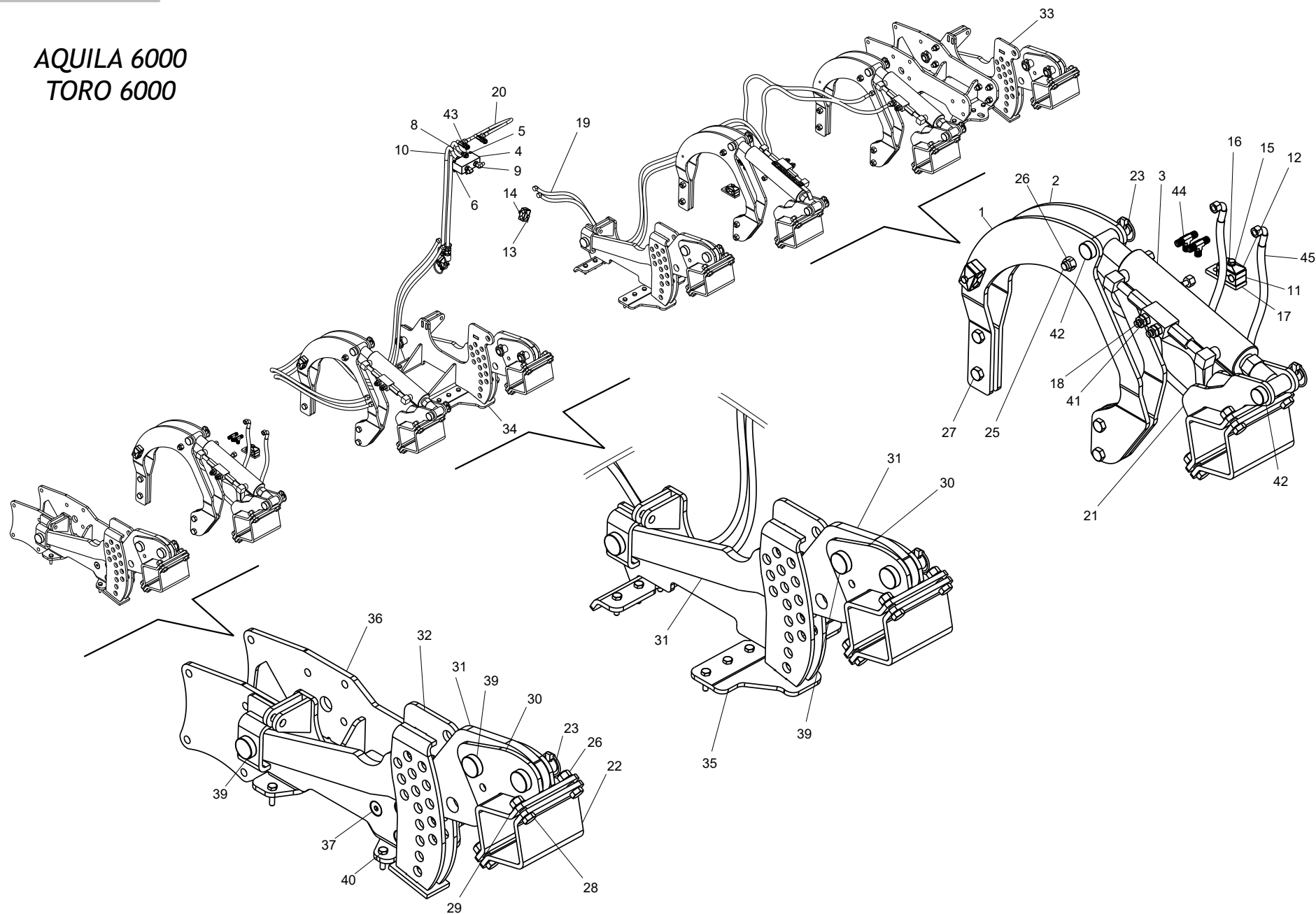
**KIT IDRAULICO  
HYDRAULIC KIT**

**TAV.020**

Pos.	Cod.	Descrizione	Description	Benennung	Description	Description
1	M27400841R	STAFFA ATTACCO MARTINETTO DX	RIGHT STIRRUP	ETRIER DROIT	BUEGEL RECHTS	ESTRIBO DERECHO
2	M27400842R	STAFFA ATTACCO MARTINETTO SX	LEFT STIRRUP	ETRIER GAUCHE	BUEGEL LINKS	ESTRIBO IZQUIERDO
3	M73400202R	MARTIN.IDRAUL.A=60 C=100 L=500	HYDR.JACK A=60 C=100 L=500			
4	F03151044R	DIVISORE DI FLUSSO A 2 VIE	FLOW DIVISOR	DIVISEUR DE FLUX	OELVERTEILER	DIVISOR DE FLUJO
5	F01020416R	VITE M6X1X55 8.8 ZN	SCREW M6X1X55 8.8 GV	VIS M6X1X55 U5739 8.8ZN	SCHRAUBE M 6X1 X 45	TORNILLO M6X1X55 U5739 8.8ZN
6	F01220011R	DADO M6X1 8ZN	NUT M6X1 8GV	CROU M6X1 8ZN	SELBSTSPERR.MUTTER M6	TUERCA M6X1 8 ZN
8	F03150266R	NIPPLO MM CIL-CIL 1 4-1 4 ZN	NIPPLE CYL.MALE 1 4 GV	NIPPLE MALE CYL. 1 4 ZN	EINSCHRAUBNIPPEL 1 4	NIPLE MACHO CIL.1 4 ZN
9	F03150839R	ADATT.A 90° ORIENT.3/8-1/4	ADAPTER 90° 1/4-HOLE 6MM.	ADAPTEUR 90°	PASSTUECK 90°	ADAPTADOR 90°
10	M58100890R	PREMONT.TUB.IDR.MART.LAT. GUA	HYDRAULIC TUBE	TUBE HYDRAUL.	HYDRAUL. ROHR	TUBO HYDRAULICO
11	F03150992R	COPPIA COLLARI X TUBO D.16	DOUBLE SUPPORT	SUPPORT DOUBLE	DOPELHALTER	SOPORTE DOBLE
12	F03150993R	PIATTO X COLLARE SUPERIORE ZN	PLATE GV	PLAT	PLATTE	PLATO
13	F01020072R	VITE M8X1,25X50 8.8 ZN	SCREW M8X1,25X50 8.8 GV	VIS M8X1,25X50 U5737 8.8ZN	SCHR. M8X1,25X50 U5737 8.8 BR	TORN. M8X1,25X50 U5737 8.8ZN
14	F01220022R	DADO M8X1,25 8ZN	NUT M8X1,25 8 GV	CROU M8X1,25 ZN	SELBSTSP.MUTT. M8X1,25 980-V	TUERCA M8X 1,25 8 ZN
15	F01020450R	VITE M8X1,25X40 8.8 ZN	SCREW M8X1,25X40 8.8 GV	VIS M8X1,25X40 U5739 8.8ZN	SCHRAUBE M 8X40	TORN. M8X1,25X40 U5739 8.8ZN
16	F01480099R	ROS.G 8,4X14,4X2,7 FLZNNC-240H	ELASTIC WASHER 8,4X14,4X2,7 GV	RONDEL.ELASTIQ.8,4X14,4X2,7 GV	FEDERSCHEIBE 8,4X14,4X2,7 GV	ARANDELA ELÁST.8,4X14,4X2,7 GV
18	F03150310R	NIPPLO MM CIL-CIL 3 8-1 4 ZN	NIPPLE CYL.MALE3 8-1 4 GV	NIPPLE MALE CYL.3 8-1 4 ZN	NIPPELZYL.3 8-1 4 ZN	NIPLE MACHO CIL.3 8-1 4 ZN
19	F03050283R	TR 2SN 1/4" F901/4 F451/4 2100	TR 2SN 1/4" F901/4 F451/4 2100	TR 2SN 1/4" F901/4 F451/4 2100	TR 2SN 1/4" F901/4 F451/4 2100	TR 2SN 1/4" F901/4 F451/4 2100
20	F03060260R	KIT TUB.BYPASS PIEGHEVOLI	KIT PIPES HYDR FOLDING			
21	M73400206R	ATTACCO MARTINETTO SU RULLO	HYDRAULIC JACK ATTACK			
22	M36200554R	STAFFA ATTACCO	STIRRUP LINKAGE	ATTELAGE ETRIER	BUEGELLINK	ESTRIBO ATAQUE
23	F02200529R	SPINA SCATTO D.11 H58 ZN	SNAP PIN D.11 H58 GV	FICHE A DETENTE D.11 H58 ZN	EINRASTSTIFT D.11 ZB	CLAVIJA DE MUELLE D.11 H58 ZN
26	F01220070R	DADO M16X1,5 10 ZN	NUT M16X1,5 10 GV	ECROU M16X1,5 10ZN	MUTTER M16X1,5	TUERCA M16X1,5 10ZN
27	F01010114R	VITE M16X1,5X50 8.8 ZN	SCREW M16X1,5X50 8.8 GV	VIS M16X1,5X50 8.8ZN	SCHRAUBE M 16X1,5X50	TORNIL. M16X1,5X50 8.8ZN
28	F01010341R	VITE M16X1,5X45 8.8 ZN	SCREW M16X1,5X45 8.8 GV	VIS M16X1,5X45 8.8ZN	SCHR.M16X1,5 X45 8.8 ZN	TORNIL. M16X1,5X45 8.8ZN
29	F01410100R	ROS.M16 17X30X 3	WASHER M16 17X30X3	RONDELLE M16 17X30X3	UNTERLEGSSCHEIBE M16 17X30X3	ARANDELA M16 17X30X3
30	M23400567R	ATTACCO SUPPORTI RULLO	CENTRAL STIRRUP	ETRIER CENTRALE	ZENTRAL BUGEL	ABRAZADERA CENTRAL
31	M12400782R	BRACCIO COLLEG.RULLO GM600	ROLLER JOINT GM600			
32	M27400757R	SUPP.CORPO TRASM.SX CENTAURO	LH ROLLER SUPPORT	SUPPORT ROULEAU GAUCHE	SCHUTZHOLM WALZE LINKS	SOPORTE RODILLO IZQUIERDO
33	M27400756R	SUPP.CORPO TRASM.DX CENTAURO	RH ROLLER SUPPORT	SUPPORT ROULEAU DROITE	SCHUTZHOLM WALZE RECHTS	SOPORTE RODILLO DERECHO
34	M55400527R	SUPPORTO BRACCIO RULLO DX	RIGHT ROLLER ARM SUPPORT		HALTER HALTER ROLLE RECHTS	
35	M55400528R	SUPPORTO BRACCIO RULLO SX	LEFT ROLLER ARM SUPPORT		HALTER HALTER ROLLE LINKS	
36	F01030150R	VITE M16X2X50 10.9 ZN	SCREW M16X2X50 10.9 GV	VIS M16X2X50	SCHRAUBE M16X2 X50	TORN. M16X2X50 10.9ZN
38	F20100090R	PERNO D32 L64 C43 TEST.D45 ZN	PIN D32 L64 C43 TEST.D45 GV	GOUJON D32 L64 C43 TEST.D45 ZN	STIFT D=32 L=70	PASADOR D32 L64 C43 TEST.D45
39	F01010039R	VITE M10X1,25X40	SCREW M10X1,25X40 U5740 10.9ZD	VIS M10X1,25X40 U5740 10.9ZD	SCHRAUBE M 10X1,25X40	TORN. M10X1,25X40 U5740 10.9ZD
40	F03020070R	RONDELLA AUTOCENTR.3/8"	AUTOCENT.WASHER 3/8"	JOINT	SCHEIBE BONDED 3/8"	ARANDELA BONDED AUTOCENT 3/8"
41	F20100049R	PERNO D22 L86 C43 TEST.D35 ZN	PIN D22 L86 C43 TEST.D35 GV	GOUJON D22 L86 C43 TEST.D35 ZN	VERBINDUNGSBOLZEN SCHUTZHOLM	PERNO D22 L86 C43 TEST.D35 ZN
42	F03020069R	RONDELLA AUTO. 1 4	BONDED WASHER 1 4	BONDED RONDELLE 1 4	DICHTSCHEIBE 1 4	BONDED ARANDELA 1 4

**TAV.030**

*AQUILA 6000  
TORO 6000*



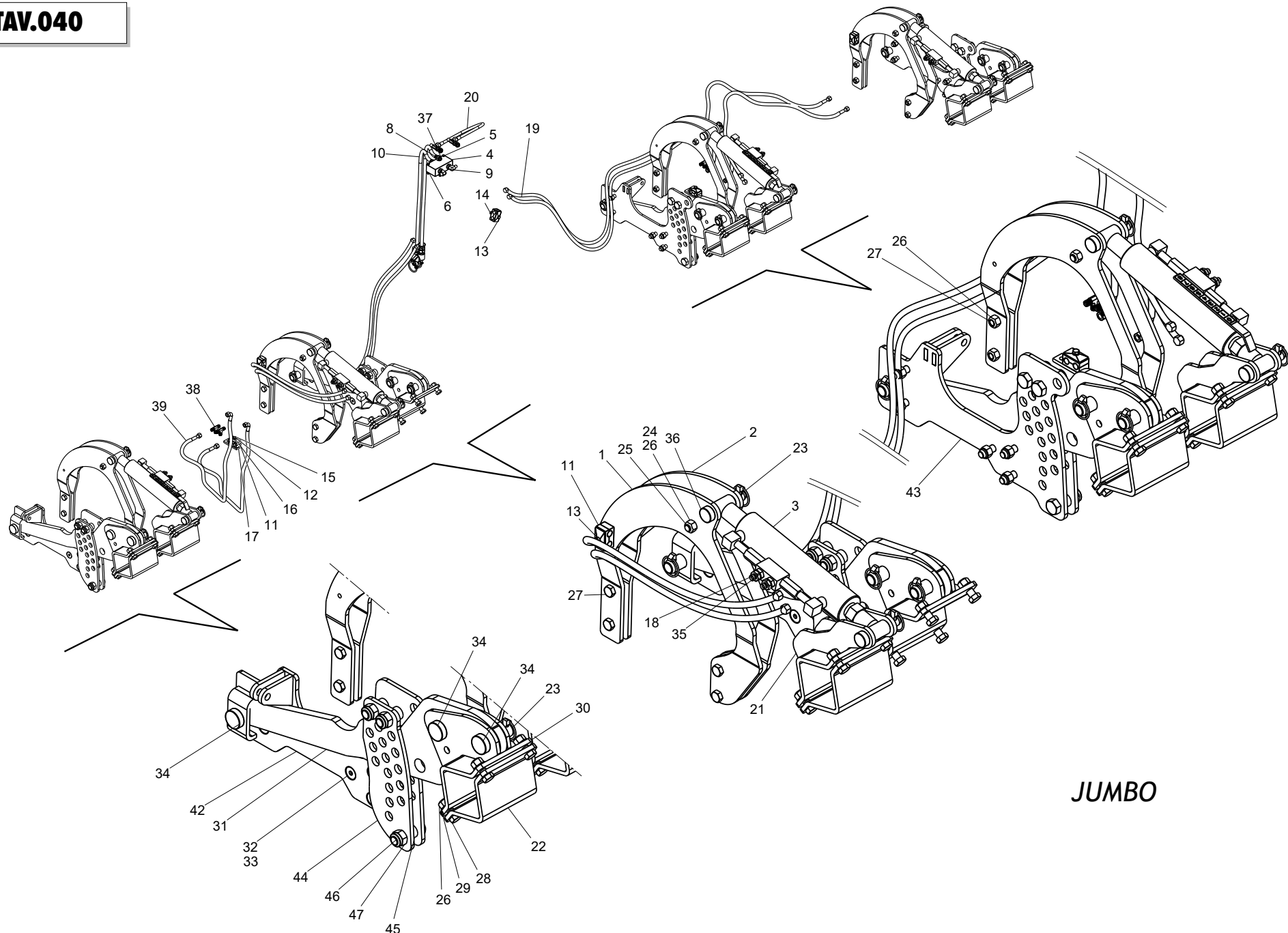


**KIT IDRAULICO  
HYDRAULIC KIT**

**TAV.030**

Pos.	Cod.	Descrizione	Description	Benennung	Description	Descripcion
1	M27400841R	STAFFA ATTACCO MARTINETTO DX	RIGHT STIRRUP	ETRIER DROIT	BUEGEL RECHTS	ESTRIBO DERECHO
2	M27400842R	STAFFA ATTACCO MARTINETTO SX	LEFT STIRRUP	ETRIER GAUCHE	BUEGEL LINKS	ESTRIBO IZQUIERDO
3	M73400202R	MARTIN.IDRAUL.A=60 C=100 L=500	HYDR.JACK A=60 C=100 L=500			
4	F03151044R	DIVISORE DI FLUSSO A 2 VIE	FLOW DIVISOR	DIVISEUR DE FLUX	OELVERTEILER	DIVISOR DE FLUJO
5	F01020416R	VITE M6X1X55 8.8 ZN	SCREW M6X1X55 8.8 GV	VIS M6X1X55 U5739 8.8ZN	SCHRAUBE M 6X1 X 45	TORNILLO M6X1X55 U5739 8.8ZN
6	F01220011R	DADO M6X1 8ZN	NUT M6X1 8GV	CROU M6X1 8ZN	SCHRAUBE M6X1,5 10ZN	TUERCA M6X1 8 ZN
8	F03150266R	NIPPLO MM CIL-CIL 1 4-1 4 ZN	NIPPLE CYL.MALE 1 4 GV	NIPPLE MALE CYL. 1 4 ZN	EINSCHRAUBNIPPEL 1 4	NIPLE MACHO CIL.1 4 ZN
9	F03150839R	ADATT.A 90° ORIENT.3/8-1/4	ADAPTER 90° 1/4-HOLE 6MM.	ADAPTEUR 90°	PASSTUECK 90°	ADAPTADOR 90°
10	M58100890R	PREMONT.TUB.IDR.MART.LAT. GUA	HYDRAULIC TUBE	TUBE HYDRAUL.	HYDRAUL. ROHR	TUBO HYDRAULICO
11	F03150992R	COPPIA COLLARI X TUBO D.16	DOUBLE SUPPORT	SUPPORT DOUBLE	DOPELHALTER	SOPORTE DOBLE
12	F03150993R	PIATTO X COLLARE SUPERIORE ZN	PLATE GV	PLAT	PLATTE	PLATO
13	F01020072R	VITE M8X1,25X50 8.8 ZN	SCREW M8X1,25X50 8.8 GV	VIS M8X1,25X50 U5737 8.8ZN	SCHR. M8X1,25X50 U5737 8.8 BR	TORN. M8X1,25X50 U5737 8.8ZN
14	F01220022R	DADO M8X1,25 8ZN	NUT M8X1,25 8 GV	CROU M8X1,25 ZN	SELBSTSPERR.MUTT. M8X1,25 980-V	TUERCA M8X1,25 8 ZN
15	F01020450R	VITE M8X1,25X40 8.8 ZN	SCREW M8X1,25X40 8.8 GV	VIS M8X1,25X40 U5739 8.8ZN	SCHRAUBE M 8X40	TORN. M8X1,25X40 U5739 8.8ZN
16	F01480099R	ROS.G 8,4X14,4X2,7 FLZNNC-240H	ELASTIC WASHER 8,4X14,4X2,7 GV	RONDEL.ELASTIQ.8,4X14,4X2,7 GV	FEDERSCHEIBE 8,4X14,4X2,7 GV	ARANDELA ELÁST.8,4X14,4X2,7 GV
17	M76100598R	PIATTO	PLATE 85X30	PLAT	PLATTE	PLATO
18	F03150310R	NIPPLO MM CIL-CIL 3 8-1 4 ZN	NIPPLE CYL.MALE3 8-1 4 GV	NIPPLE MALE CYL.3 8-1 4 ZN	NIPPELZYL.3 8-1 4 ZN	NIPLE MACHO CIL.3 8-1 4 ZN
19	F03050283R	TR 2SN 1/4" F901/4 F451/4 2100	TR 2SN 1/4" F901/4 F451/4 210	TR 2SN 1/4" F901/4 F451/4 2100	TR 2SN 1/4" F901/4 F451/4 2100	TR 2SN 1/4" F901/4 F451/4 2100
20	F03060260R	KIT TUB.BYPASS PIEGHEVOLI	KIT PIPES HYDR FOLDING		KIT ROHRE HYDR KLAPPEN	
21	M73400206R	ATTACCO MARTINETTO SU RULLO	HYDRAULIC JACK ATTACK			
22	M36200554R	STAFFA ATTACCO	STIRRUP LINKAGE	ATTELAGE ETRIER	BUEGELINK	ESTRIBO ATAQUE
23	F02200529R	SPINA SCATTO D.11 H58 ZN	SNAP PIN D.11 H58 GV	FICHE A DETENTE D.11 H58 ZN	EINRASTSTIFT D.11 ZB	CLAVIJA DE MUELLE D.11 H58 ZN
25	F01010124R	VITE M16X1,5X100 8.8 ZN	SCREW M16X1,5X100 8.8 GV	VIS M16X1,5X100 U5738 8.8ZN	SCHRAUBE M16X1,5X100	TORNIL.M16X1,5X100 U5738 8.8ZN
26	F01220070R	DADO M16X1,5 10 ZN	NUT M16X1,5 10 GV	ECROU M16X1,5 10ZN	MUTTER M16X1,5	TUERCA M16X1,5 10ZN
27	F01010114R	VITE M16X1,5X50 8.8 ZN	SCREW M16X1,5X50 8.8 GV	VIS M16X1,5X50 8.8ZN	SCHRAUBE M 16X1,5X50	TORNIL. M16X1,5X50 8.8ZN
28	F01010341R	VITE M16X1,5X45 8.8 ZN	SCREW M16X1,5X45 8.8 GV	VIS M16X1,5X45 8.8ZN	SCHR.M16X1,5 X45 8.8 ZN	TORNIL. M16X1,5X45 8.8ZN
29	F01410100R	ROS.M16 17X30X 3	WASHER M16 17X30X3	RONDELLE M16 17X30X3	UNTERLEGSscheibe M16 17X30X3	ARANDELA M16 17X30X3
30	M23400567R	ATTACCO SUPPORTI RULLO	CENTRAL STIRRUP	ETRIER CENTRALE	ZENTRAL BUGEL	ABRAZADERA CENTRAL
31	M12400782R	BRACCIO COLLEG.RULLO GM600	ROLLER JOINT GM600			
32	M27400757R	SUPP.CORPO TRASM.SX CENTAURO	LH ROLLER SUPPORT	SUPPORT ROULEAU GAUCHE	SCHUTZHOLM WALZE LINKS	SOPORTE RODILLO IZQUIERDO
33	M27400756R	SUPP.CORPO TRASM.DX CENTAURO	RH ROLLER SUPPORT	SUPPORT ROULEAU DROITE	SCHUTZHOLM WALZE RECHTS	SOPORTE RODILLO DERECHO
34	M55400527R	SUPPORTO BRACCIO RULLO DX	RIGHT ROLLER ARM SUPPORT		HALTER HALTER ROLLE RECHTS	
35	M55400528R	SUPPORTO BRACCIO RULLO SX	LEFT ROLLER ARM SUPPORT		HALTER HALTER ROLLE LINKS	
36	M55400530R	SUPPORTO REGOLAZIONE RULLO	ROLLER ADJUSTING SUPPORT	SUPPORT REGULATION ROULEAU	WALZE EINSTELLUNG HALTER	SOPORTE REGULACION RODILLO
37	F01030150R	VITE M16X2X50 10.9 ZN	SCREW M16X2X50 10.9 GV	VIS M16X2X50	SCHRAUBE M16X2 X50	TORN. M16X2X50 10.9ZN
39	F20100090R	PERNO D32 L64 C43 TEST.D45 ZN	PIN D32 L64 C43 TEST.D45 GV	GOUJON D32 L64 C43 TEST.D45 ZN	STIFT D=32 L=70	PASADOR D32 L64 C43 TEST.D45
40	F01010039R	VITE M10X1,25X40	SCREW M10X1,25X40 U5740 10.9ZD	VIS M10X1,25X40 U5740 10.9ZD	SCHRAUBE M 10X1,25X40	TORN. M10X1,25X40 U5740 10.9ZD
41	F03020070R	RONDELLA AUTOCENTR.3/8"	AUTOCENT.WASHER 3/8"	JOINT	SCHIEBE BONDED 3/8"	ARANDELA BONDED AUTOCENT 3/8"
42	F20100049R	PERNO D22 L86 C43 TEST.D35 ZN	PIN D22 L86 C43 TEST.D35 GV	GOUJON D22 L86 C43 TEST.D35 ZN	VERBINDUNGSBOLZEN SCHUTZHOLM	PERNO D22 L86 C43 TEST.D35 ZN
43	F03020069R	RONDELLA AUTO. 1 4	BONDED WASHER 1 4	BONDED RONDELLE 1 4	DICHTSCHEIBE 1 4	BONDED ARANDELA 1 4
44	F03020033R	UNIONE A T BSP 1/4-19 >	TEE BSP 1/4-19	RACCORD "T" BSP 1/4-19	UNION "T" BSP 1/4-19	UNION "T" BSP 1/4-19
45	F03050229R	TR 2SN 1/4" FD1/4 F901/4 1200>	TR 2SN 1/4" FD1/4 F901/4 120	TR 2SN 1/4" FD1/4 F901/4 1200	HYDRAUL. ROHR L.1200	TR 2SN 1/4" FD1/4 F901/4 1200

**TAV.040**



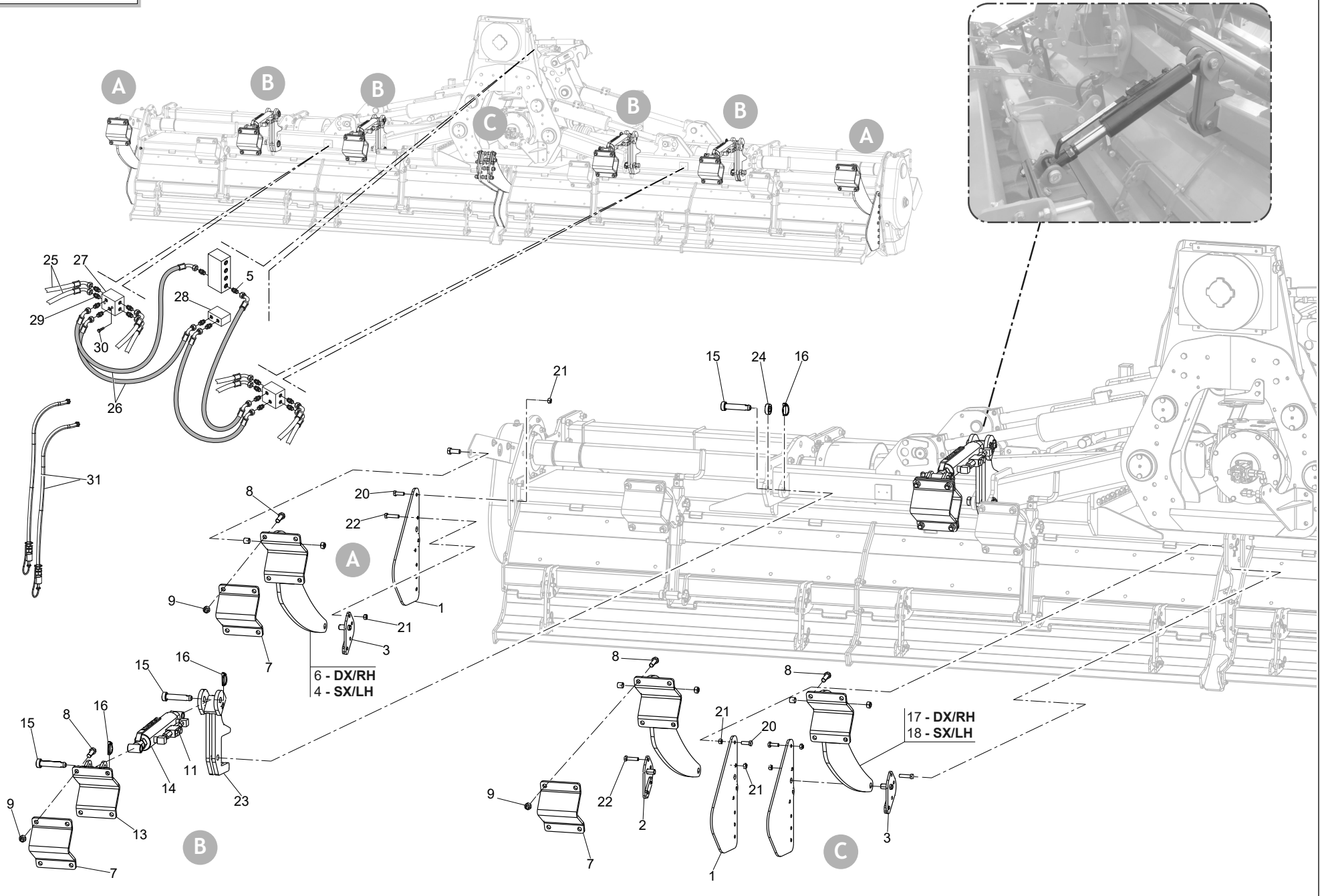
**JUMBO**

**KIT IDRAULICO  
HYDRAULIC KIT**

**TAV.040**

Pos.	Cod.	Descrizione	Description	Benennung	Description	Descrpcion
1	M27400841R	STAFFA ATTACCO MARTINETTO DX	RIGHT STIRRUP	ETRIER DROIT	BUEGEL RECHTS	ESTRIBO DERECHO
2	M27400842R	STAFFA ATTACCO MARTINETTO SX	LEFT STIRRUP	ETRIER GAUCHE	BUEGEL LINKS	ESTRIBO IZQUIERDO
3	M73400202R	MARTIN.IDRAUL.A=60 C=100 L=500	HYDR.JACK A=60 C=100 L=500			
4	F03151044R	DIVISORE DI FLUSSO A 2 VIE	FLOW DIVISOR	DIVISEUR DE FLUX	OELVERTEILER	DIVISOR DE FLUJO
5	F01020416R	VITE M6X1X55 8.8 ZN	SCREW M6X1X55 8.8 GV	VIS M6X1X55 U5739 8.8ZN	SCHRAUBE M 6X1 X 45	TORNILLO M6X1X55 U5739 8.8ZN
6	F01220011R	DADO M6X1 8ZN	NUT M6X1 8GV	CROU M6X1 8ZN	SELBSTSPERR.MUTTER M6	TUERCA M6X1 8 ZN
8	F03150266R	NIPPLO MM CIL-CIL 1 4-1 4 ZN	NIPPLE CYL.MALE 1 4 GV	NIPPLE MALE CYL. 1 4 ZN	EINSCHRAUBNIPPEL 1 4	NIPLE MACHO CIL.1 4 ZN
9	F03150839R	ADATT.A 90° ORIENT.3/8-1/4	ADAPTER 90° 1/4-HOLE 6MM.	ADAPTEUR 90°	PASSTUECK 90°	ADAPTADOR 90°
10	M58100890R	PREMONT.TUB.IDR.MART.LAT. GUA	HYDRAULIC TUBE	TUBE HYDRAUL.	HYDRAUL. ROHR	TUBO HYDRAULICO
11	F03150992R	COPPIA COLLARI X TUBO D.16	DOUBLE SUPPORT	SUPPORT DOUBLE	DOPELHALTER	SOPORTE DOBLE
12	F03150993R	PIATTO X COLLARE SUPERIORE ZN	PLATE GV	PLAT	PLATTE	PLATO
13	F01020072R	VITE M8X1,25X50 8.8 ZN	SCREW M8X1,25X50 8.8 GV	VIS M8X1,25X50 U5737 8.8ZN	SCHR. M8X1,25X50 U5737 8.8 BR	TORN. M8X1,25X50 U5737 8.8ZN
14	F01220022R	DADO M8X1,25 8ZN	NUT M8X1,25 8 GV	CROU M8X1,25 ZN	SELBSTSP.MUTT. M8X1,25 980-V	TUERCA M8X 1,25 8 ZN
15	F01020450R	VITE M8X1,25X40 8.8 ZN	SCREW M8X1,25X40 8.8 GV	VIS M8X1,25X40 U5739 8.8ZN	SCHRAUBE M 8X40	TORN. M8X1,25X40 U5739 8.8ZN
16	F01480099R	ROS.G 8,4X14,4X2,7 FLZNNC-240H	ELASTIC WASHER 8,4X14,4X2,7 GV	RONDEL.ELASTIQ.8,4X14,4X2,7 GV	FEDERSCHEIBE 8,4X14,4X2,7 GV	ARANDELA ELÁST.8,4X14,4X2,7 GV
17	M76100598R	PIATTO	PLATE 85X30	PLAT	PLATTE	PLATO
18	F03150310R	NIPPLO MM CIL-CIL 3 8-1 4 ZN	NIPPLE CYL.MALE3 8-1 4 GV	NIPPLE MALE CYL.3 8-1 4 ZN	NIPPELZYL.3 8-1 4 ZN	NIPLE MACHO CIL.3 8-1 4 ZN
19	F03050283R	TR 2SN 1/4" F901/4 F451/4 2100	TR 2SN 1/4" F901/4 F451/4 210	TR 2SN 1/4" F901/4 F451/4 2100	TR 2SN 1/4" F901/4 F451/4 2100	TR 2SN 1/4" F901/4 F451/4 2100
20	F03060260R	KIT TUB.BYPASS PIEGHEVOLI	KIT PIPES HYDR FOLDING		KIT ROHRE HYDR KLAPPEN	
21	M73400206R	ATTACCO MARTINETTO SU RULLO	HYDRAULIC JACK ATTACK			
22	M36200554R	STAFFA ATTACCO	STIRRUP LINKAGE	ATTELAGE ETRIER	BUEGELINK	ESTRIBO ATAQUE
23	F02200529R	SPINA SCATTO D.11 H58 ZN	SNAP PIN D.11 H58 GV	FICHE A DETENTE D.11 H58 ZN	EINRASTSTIFT D.11 ZB	CLAVIJA DE MUELLE D.11 H58 ZN
24	M40200515R	BOCCOLA UNIONE 3 P.	BUSH 3 POINT	BAGUE 3EME POINT	BUECHSE DREIPUNKT	BRUJULA 3 PUNTO
25	F01010124R	VITE M16X1,5X100 8.8 ZN	SCREW M16X1,5X100 8.8 GV	VIS M16X1,5X100 U5738 8.8ZN	SCHRAUBE M16X1,5X100	TORNIL.M16X1,5X100 U5738 8.8ZN
26	F01220070R	DADO M16X1,5 10 ZN	NUT M16X1,5 10 GV	ECROU M16X1,5 10ZN	MUTTER M16X1,5	TUERCA M16X1,5 10ZN
27	F01010114R	VITE M16X1,5X50 8.8 ZN	SCREW M16X1,5X50 8.8 GV	VIS M16X1,5X50 8.8ZN	SCHRAUBE M 16X1,5X50	TORNIL. M16X1,5X50 8.8ZN
28	F01010341R	VITE M16X1,5X45 8.8 ZN	SCREW M16X1,5X45 8.8 GV	VIS M16X1,5X45 8.8ZN	SCHR.M16X1,5 X45 8.8 ZN	TORNIL. M16X1,5X45 8.8ZN
29	F01410100R	ROS.M16 17X30X 3	WASHER M16 17X30X3	RONDELLE M16 17X30X3	UNTERLEGSCHIEBE M16 17X30X3	ARANDELA M16 17X30X3
30	M23400567R	ATTACCO SUPPORTI RULLO	CENTRAL STIRRUP	ETRIER CENTRALE	ZENTRAL BUGEL	ABRAZADERA CENTRAL
31	M12400782R	BRACCIO COLLEG.RULLO GM600	ROLLER JOINT GM600			
32	F01030150R	VITE M16X2X50 10.9 ZN	SCREW M16X2X50 10.9 GV	VIS M16X2X50	SCHRAUBE M16X2 X50	TORN. M16X2X50 10.9ZN
33	F01230085R	DADO M16X2 10 ZN	NUT M16X2 10 GV	ECROU M16X2 10ZN	MUTTER M16X 2 8 ZN	TUERCA M16X2 10ZN
34	F20100090R	PERNO D32 L64 C43 TEST.D45 ZN	PIN D32 L64 C43 TEST.D45 GV	GOUJON D32 L64 C43 TEST.D45 ZN	STIFT D=32 L=70	PASADOR D32 L64 C43 TEST.D45
35	F03020070R	RONDELLA AUTOCENTR.3/8"	AUTOCENT.WASHER 3/8"	JOINT	SCHIEBE BONDED 3/8"	ARANDELA BONDED AUTOCENT 3/8"
36	F20100049R	PERNO D22 L86 C43 TEST.D35 ZN	PIN D22 L86 C43 TEST.D35 GV	GOUJON D22 L86 C43 TEST.D35 ZN	VERBINDUNGSBOLZEN SCHUTZHOLM	PERNO D22 L86 C43 TEST.D35 ZN
37	F03020069R	RONDELLA AUTO. 1 4	BONDED WASHER 1 4	BONDED RONDELLE 1 4	DICHTSCHIEBE 1 4	BONDED ARANDELA 1 4
38	F03020033R	UNIONE A T BSP 1/4-19 >	TEE BSP 1/4-19	RACCORD "T" BSP 1/4-19	UNION "T" BSP 1/4-19	UNION "T" BSP 1/4-19
39	F03050229R	TR 2SN 1/4" FD1/4 F901/4 1200>	TR 2SN 1/4" FD1/4 F901/4 120	TR 2SN 1/4" FD1/4 F901/4 1200	HYDRAUL. ROHR L.1200	TR 2SN 1/4" FD1/4 F901/4 1200
42	M37400606R	SUPPORTO CORPO TRASMISSIONE SX	LH TRASMISSION TROUGH SUPPORT			
43	M37400605R	SUPPORTO CORPO TRASMISSIONE DX	RH TRASMISSION TROUGH SUPPORT			
44	M37400608R	PIASTRA PER ASTA RULLO	PLATE FOR ROLLER ROD			
45	M12400922R	DISTANZIALE D=30 D=22,5 L=24	SPACER D=30 D=22,5 L=24			
46	F01010398R	VITE M22X1,5X70 8.8 ZN	SCREW M22X1,5X70 8.8 GV	VIS M22X1,5X70U5740 8.8ZN	SCHR.M22X1,5X 70 U5740 8.8 ZB	TORNILLO M22X1,5X70U5740 8.8ZN
47	F01230269R	DADO M22X1,5 CL8 ZN	NUT M22X1,5 CL8 GV	ECROU M22X1,5 CL8 ZN	SELBSTSP.MUTT. M22X1,5 980-V	TUERCA M22X1,5 CL8 ZN

**TAV.050**

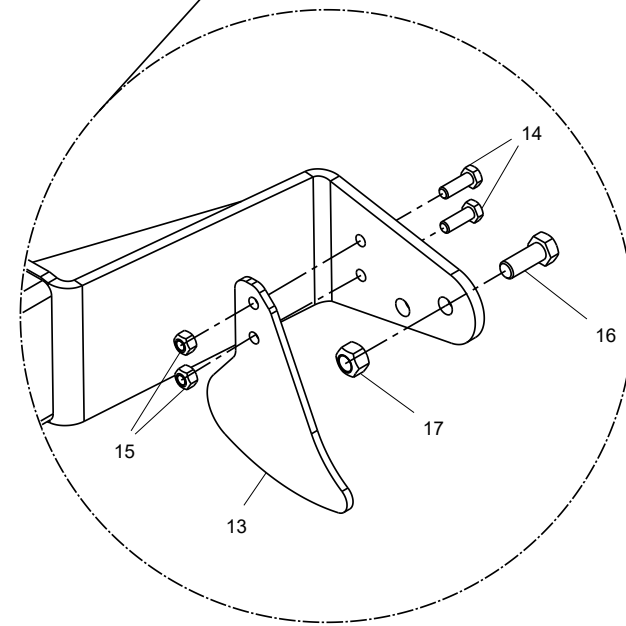
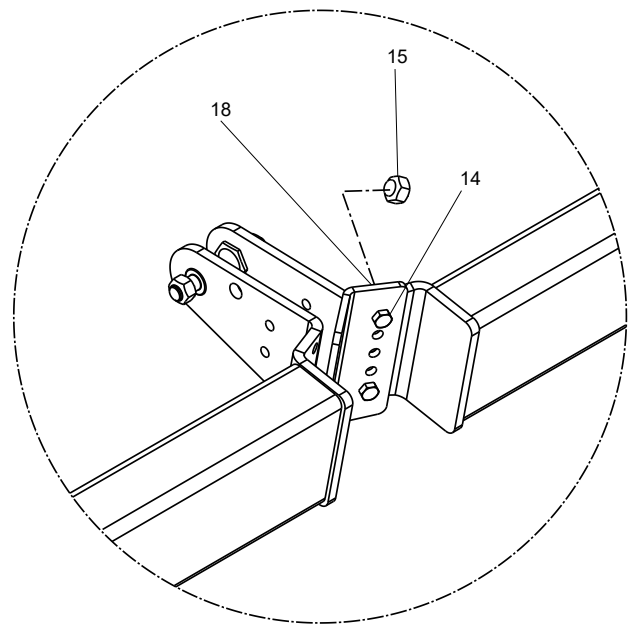
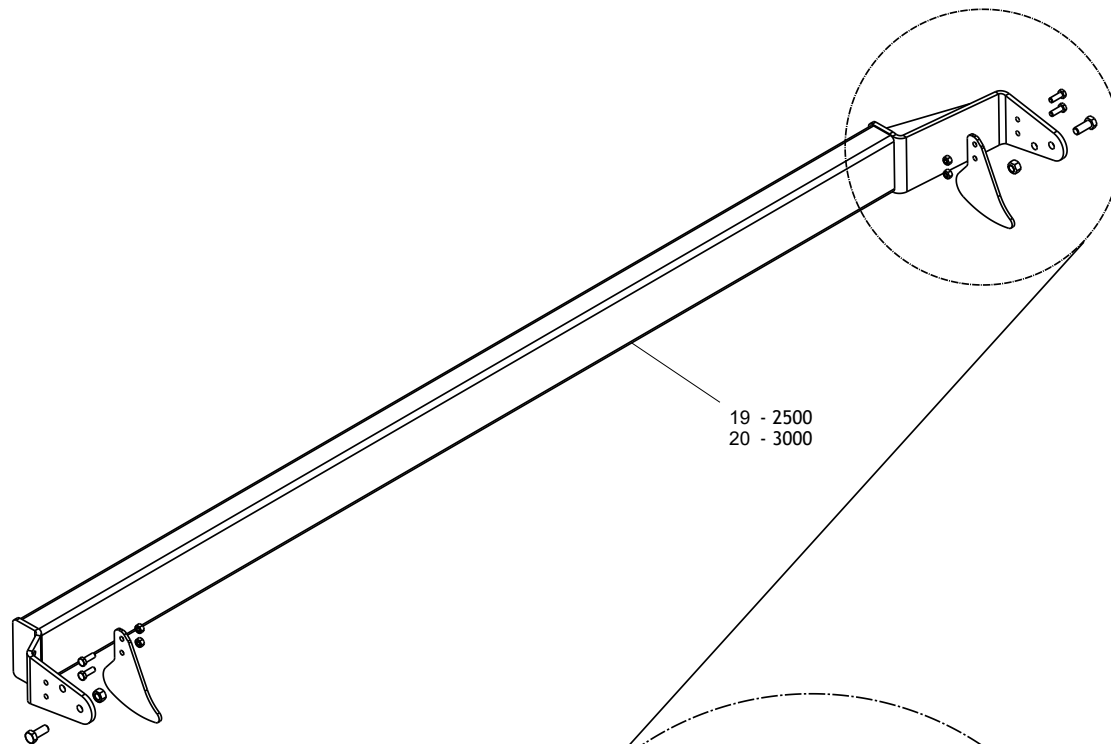
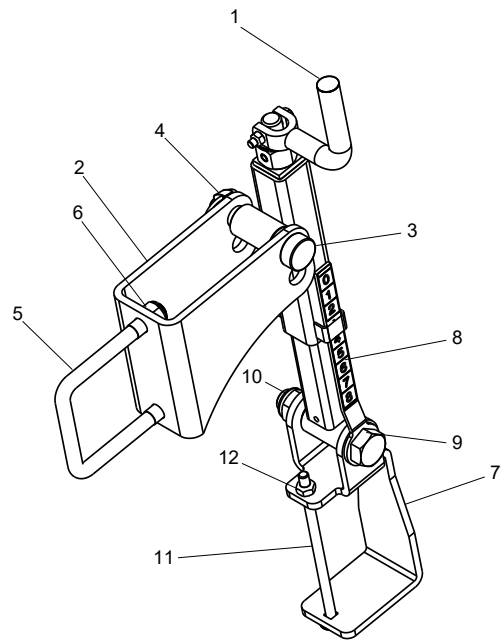


**KIT IDRAULICO  
HYDRAULIC KIT**

**TAV.050**

Pos.	Cod.	Descrizione	Description	Benennung	Description	Description
1	M16700630R	PROTEZIONE LATERALE	LATERAL PROTECTION			
2	M72400849R	SUPPORTO RULLO	SUPPORT ROLLER		HALTER WALZE	
3	M72400852R	SUPPORTO RULLO	SUPPORT ROLLER		HALTER WALZE	
4	M72400842R	BRACCIO SUPP.RULLO EST. SX.	ROLLER ARM SUPPORT LEFT OUTER		WALZE ARM HALTER LI. AEUSSERE	
5	F03080082R	NIPPLO M1 4 SEAL ML10 ZN	NIPPLE M1 4 SEAL ML10 GV	NIPLE M1 4 SEAL ML10 ZN	NIPPEL M1 4 DICHTUNG ML10 ZN	NIPLE M1/4 SEAL ML10 ZN
6	M72400841R	BRACCIO SUPP.RULLO EST. DX.	ROLLER ARM SUPPORT RIGHT OUTS.		WALZE ARM HALTER RE. OUTS.	
7	M36200554R	STAFFA ATTACCO	STIRRUP LINKAGE	ATTELAGE ETRIER	BUEGELLINK	ESTRIBO ATAQUE
8	F01010341R	VITE M16X1,5X45 8.8 ZN	SCREW M16X1,5X45 8.8 GV	VIS M16X1,5X45 8.8ZN	SCHR.M16X1,5 X45 8.8 ZN	TORNIL. M16X1,5X45 8.8ZN
9	F01220070R	DADO M16X1,5 10 ZN	NUT M16X1,5 10 GV	ECROU M16X1,5 10ZN	MUTTER M16X1,5	TUERCA M16X1,5 10ZN
11	F03080081R	NIPPLO M3 8 SEAL ML10 ZN	NIPPLE M3 8 SEAL ML10 GV	NIPLE M3 8 SEAL ML10 ZN	NIPPEL M3 8 DICHTUNG ML10 ZN	NIPLE M3/8 SEAL ML10 ZN
13	M27400833R	ATTACCO MARTINETTO	JACK LINK	ATTELAGE CYLINDRE	WINDEHALTERUNG	ENGANCHE DEL GATO
14	M58100638R	MARTINETTO REGOLAZIONE RULLO	HYDRAULIQUE ROLLER ADJUSTER	MANIVELLE HYDRAULIQUE REG.ROUL	HYDRAUL.SPINDELVERSTELLUNG	GATO HYDRAULICO REG.RODILLO
15	F20100049R	PERNO D22 L86 C43 TEST.D35 ZN	PIN D22 L86 C43 TEST.D35 GV	GOUJON D22 L86 C43 TEST.D35 ZN	VERBINDUNGSBOLZEN SCHUTZHOLM	PERNO D22 L86 C43 TEST.D35 ZN
16	F02200529R	SPINA SCATTO D.11 H58 ZN	SNAP PIN D.11 H58 GV	FICHE A DETENTE D.11 H58 ZN	EINRASTSTIFT D.11 ZB	CLAVIJA DE MUELLE D.11 H58 ZN
17	M72400573R	BRACCIO DX SUPP.RULLO INTERNO	RH ARM OF INNER ROLLER SUPPORT			
18	M72400574R	BRACCIO SX SUPP.RULLO INTERNO	LH ARM OF INNER ROLLER SUPPORT			
20	F01010288R	VITE M12X1,25X35 8.8 ZN	SCREW M12X1,25X35 8.8 GV	VIS M12X1,25X35 8.8ZN	SCHRAUBE M12X1,25X35	TORNIL.M12X1,25X35 8.8ZN
21	F01220047R	DADO M12X1,25 8 ZN	NUT M12X1,25 8 GV	ECROU M12X1,25 8ZN	SELBSTSP.MUTTER M12X1,25 980-V	TUERCA M12X1,25 8 ZN
22	F01010055R	VITE M12X1,25X50 8.8 ZN	SCREW M12X1,25X50 8.8 GV	VIS M12X1,25X50 8.8ZN	SCHRAUBE M 12X1,25X50	TORNIL.M12X1,25X50 8.8ZN
23	M16700525R	ATTACCO MARTINETTO RIALZATO	HYDRAULIC HITCH ADJUSTER		HYDRAULIK BOCK ADJUSTER	
24	M33100606R	DISTANZIALE PERNO CERNIERA	SPACER	ENTRET.D=42,4 D=22,5 L=15	DISTANZSTUECK	DISTANC.D=42,4 D=22,5 L=15
25	F03070092R	TUBO 1/4 R17 FL10 CFL10 L600	PIPE 1/4 R17 FL10 CFL10 L600		ROHR 1/4 R17 FL10 CFL10 L600	
26	F03070232R	TG 1/4 R17 CFL10 CFL10 2500	TG 1/4 R17 CFL10 CFL10 2500			
27	F03080209R	MASSELLO 3+3 VIE FEMM. 3/8"	BLOCK VALVE 3+3 F. 3/8"	VALVE BLOQ. 3 3 F. 3 8	VENTIL SCHL. 3 3 VIE F. 3 8	VALVULA BLOQ. 3 3 F. 3 8
28	F03151044R	DIVISORE DI FLUSSO A 2 VIE	FLOW DIVISOR	DIVISEUR DE FLUX	OELVERTEILER	DIVISOR DE FLUJO
29	F03080082R	NIPPLO M1 4 SEAL ML10 ZN	NIPPLE M1 4 SEAL ML10 GV	NIPLE M1 4 SEAL ML10 ZN	NIPPEL M1 4 DICHTUNG ML10 ZN	NIPLE M1/4 SEAL ML10 ZN
30	F01040047R	VITE M5X0,8X30 A2IX	SCREW M5X0,8X30 A2IX	VIS M5X0,8X30 A2IX	SCHRAUBE M5X0,8X30 A2IX	TORNILLO M5X0,8X30 A2IX
31	F03060171R	PREM. TUB.IDR.MART.LAT.GUA.DI>	PREM.*TUB.IDR.MART.LAT		PREM.*TUB.IDR.MART.LAT	

**TAV.060**



**BARRA LIVELLATRICE  
LEVELLING BAR**

**TAV.060**

Pos.	Cod.	Descrizione	Description	Benennung	Description	Descripcion
1	M36200887R	MARTINETTO REGOL.BARRA	MECHANICAL ADJUSTER BAR DM R.	MANIVELLE MECHANIQUE	SPINDEL MECCANICO	GATO MECANICO
2	M23400444R	STAFFA ATTACCO MARTINETTO	ADJUST HITCH PLATE		BUEGELLINK	
3	F20100049R	PERNO D22 L86 C43 TEST.D35 ZN	PIN D22 L86 C43 TEST.D35 GV	GOUJON D22 L86 C43 TEST.D35 ZN	VERBINDUNGSBOLZEN SCHUTZHOLM	PERNO D22 L86 C43 TEST.D35 ZN
4	F02200529R	SPINA SCATTO D.11 H58 ZN	SNAP PIN D.11 H58 GV	FICHE A DETENTE D.11 H58 ZN	EINRASTSTIFT D.11 ZB	CLAVIJA DE MUELLE D.11 H58 ZN
5	F20110800R	CAV.R.B=100 M=16X2 L=135	U BOLT R.B=100 M=16X2 L=135	ATTEL.B=100 M=16X2 L=135	U-B GEL F. KR MELSCHIENE	PERNO U B=100 M=16X2 L=135
6	F01230085R	DADO M16X2 10 ZN	NUT M16X2 10 GV	ECROU M16X2 10ZN	MUTTER M16X 2 8 ZN	TUERCA M16X2 10ZN
7	M43400464R	PIASTRA ATTACCO MARTINETTO	PLATE PF JACK ATTACK		WINDEHALTERUNG PLATTE	
8	M23400945R	COMP.ASTA REGOLAZ. MARTINETTI	RULER ASSEMBLY		SKALA WALZENVERSTELLUNG	
9	F01010194R	VITE M22X1,5X110 8.8 ZN	SCREW M22X1,5X110 8.8 GV	VIS M22X1,5X110 U5738 8.8ZN	SCHRAUBE M 22X1,5X110	TORNIL.M22X1,5X110 U5738 8.8ZN
10	F01230269R	DADO M22X1,5 CL8 ZN	NUT M22X1,5 CL8 GV	ECROU M22X1,5 CL8 ZN	SELBSTSP.MUTT. M22X1,5 980-V	TUERCA M22X1,5 CL8 ZN
11	F01060209R	VITE M10X1,5X200 8.8 ZN	SCREW M10X1,5X200 8.8 GV	VIS M10X1,5X200 U5731 8.8ZN	SCHRAUBE M10X1,5X200 U5731 8.8	TORN. M10X1,5X200 U5731 8.8ZN
12	F01220033R	DADO M10X1,5 8 ZN	NUT M10X1,5 8 GV	ECROU M10X1,5 8GALV.	MUTTER M10	TUERCA M10X1,5 8
13	M26400414R	CONVOGLIATORE	CONVEYOR	CONVOYEUR	PLATTE	CONVOYADOR
14	F01010288R	VITE M12X1,25X35 8.8 ZN	SCREW M12X1,25X35 8.8 GV	VIS M12X1,25X35 8.8ZN	SCHRAUBE M12X1,25X35	TORNIL.M12X1,25X35 8.8ZN
15	F01220047R	DADO M12X1,25 8 ZN	NUT M12X1,25 8 GV	ECROU M12X1,25 8ZN	SELBSTSP.MUTTER M12X1,25 980-V	TUERCA M12X1,25 8 ZN
16	F01010362R	VITE M18X1,5X45 8.8 ZN	SCREW M18X1,5X45 8.8 GV	VIS M18X1,5X45 U5740 8.8ZN	SCHRAUBE M 18X1,5X45	TORNIL. M18X1,5X45 U5740 8.8ZN
17	F01220081R	DADO M18X1,5 8 ZN	NUT M18X1,5 8 GV	ECROU M18X1,5 D980 8ZN	SELBSTSP.MUTT. M18X1,5 980-V	TUERCA M18X1,5 D980 8ZN
18	M12400458R	PIATTO	PLATE	PLAT	PLATTE	PLATO
19	M43428323R	COM.SAL.BARRA LIV.RULLO	WELD.LEVELING BAR ROLLER ASS.Y			
20	M43433323R	COM.SAL.BARRA LIV.RULLO	WELD.LEVELING BAR ROLLER ASS.Y			

**USATE SEMPRE RICAMBI ORIGINALI  
ALWAYS USE ORIGINAL SPARE PARTS  
IMMER DIE ORIGINAL-ERSATZTEILE VERWENDEN  
EMPLOYEZ TOUJOURS LES PIECES DE RECHANGE ORIGINALES  
UTILIZAR SIEMPRE REPUESTOS ORIGINALES**



**Servizio Assistenza Tecnica - After Sales Service  
Servizio Ricambi - Spare Parts Service**



**maschio.com**

DEALER:



**MASCHIO GASPARDO SpA**

**Registered Office and Production Plant**

Via Marcello, 73 - 35011 Campodarsego (Padova) - Italy

Tel. +39 049 9289810

Fax +39 049 9289900

info@maschio.com

www.maschionet.com

**MASCHIO GASPARDO SpA**

**Production Plant**

Via Mussons, 7 - 33075 Morsano al Tagliamento (PN) - Italy

Tel. +39 0434 695410

Fax +39 0434 695425

info@gaspardo.it

**MASCHIO DEUTSCHLAND GMBH**

Außere Nürnberger Straße 5

D - 91177 Thalmässing - Deutschland

Tel. +49 (0) 9173 79000

Fax +49 (0) 9173 790079

dialog@maschio.de

www.maschionet.de

**MASCHIO-GASPARDO USA Inc**

120 North Scott Park Road

Eldridge, IA 52748 - USA

Ph. +1 563 2859937

Fax +1 563 2859938

info@maschio.us

**MASCHIO FRANCE Sarl**

37 Rue Hippolyte Bayard |

60000 Beauvais

France

Tel. +33 09 75533796

info@maschio.fr

**MASCHIO-GASPARDO ROMANIA S.R.L.**

Strada Înfrăţirii, F.N.

315100 Chisineu-Cris (Arad) -România

Tel. +40 257 307030

Fax +40 257 307040

info@maschio.ro

**ООО МАСКИО-ГАСПАРДО РУССИЯ**

04130, Россия,

Волгоградская область,

г. Волжский, ул. Пушкина, 117 «б».

Тел.: +7 8443 203100

факс: +7 8443 203101

e-mail: info@maschio.ru

**MASCHIO IBERICA S.L.**

**MASCHIO-GASPARDO POLAND**

**MASCHIO-GASPARDO UCRAINA**

**GASPARDO-MASCHIO TURCHIA**

**MASCHIO-GASPARDO CINA**

**MASCHIO-GASPARDO INDIA**